



2.3 User's Guide

Blackberry Storm

April 2010

1. Introduction:

PDATrade is a powerful application that allows you to access real-time and streaming stock information. Using PDATrade, you can stream stock quotes to your Blackberry Storm, check the markets, look up commodities, get news and charts for any company, and much more. All data is provided in real-time, so you need just your Blackberry Storm and an internet connection.

2. Requirements:

You must have a Blackberry Storm to run this version of PDATrade. Users with other Blackberry models should view the regular PDATrade Blackberry guide for instructions. You must have an internet connection to download information to your device.

3. Installation:

a. Install via PC:

To install PDATrade on your Storm using your PC, follow these steps:

- i. Connect your Storm to your computer. Make sure it is recognized by Blackberry Device Manager. Your Storm will include instructions on how to establish the connection.
- ii. On your PC, go to www.pdatrade.com. Go to the Blackberry product page and click "Click here to install."
- iii. Click the Blackberry on the right, for OS 4.7, to download the .zip file.
- iv. Follow the instructions posted below the link.

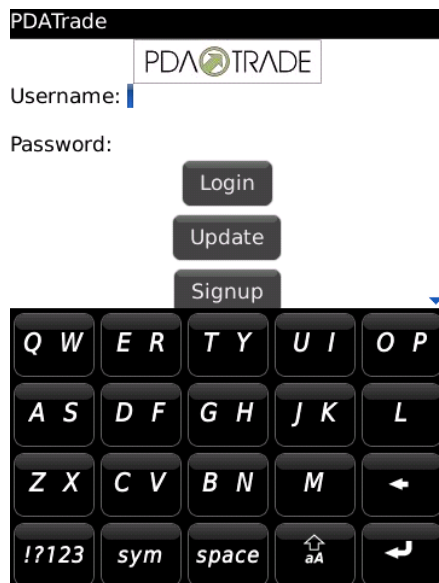
b. Install via PDA:

To install PDATrade over-the-air (OTA) directly onto your Storm, follow these steps:

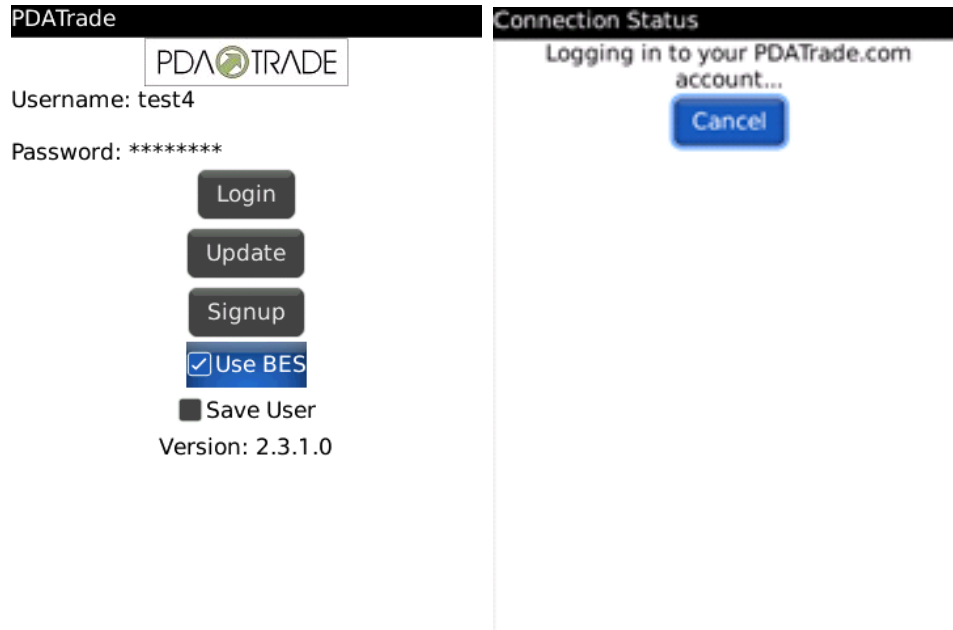
- i. On your device, navigate to www.pdatrade.com/installs.
- ii. Click Blackberry Storm OTA Installer to begin the download.
- iii. Follow the instructions that appear on your Blackberry.

4. Working with PDATrade:

To run PDATrade, scroll to the PDATrade icon in the Downloads folder. Select it to launch the application.



- a. To login, enter your user ID and password and click Login. The program will track your progress and let you know when a connection with our servers has been established. Click Cancel at any time to stop the process. If your corporation uses Blackberry Enterprise Server (BES), check the "Use BES" box to use it when connecting. Check the "Save User" box to store your username and password in memory for future use.



- b. To access the features of PDATrade, select a page from the list. Each will open up a new window with the feature you selected. To return to the home screen from any of these pages, choose Close on the Blackberry menu or press the Back/Escape button.



- c. Streaming: To switch between pages select a page from the Blackberry menu. Scroll down to view any symbols that don't appear on the screen. Tap any symbol to access detailed quotes, news, and charts for that symbol.

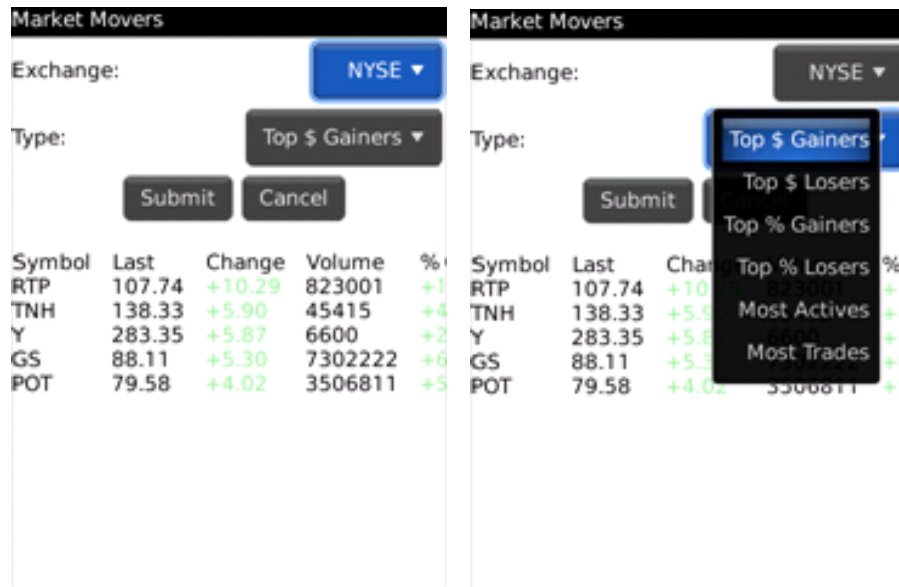
Sym	Time	Lst	Bid	Ask	Sym	Time	Lst	Bid	Ask
AAPL	12:46	206.66	206.61	206.66	AAPL	12:46	206.66	206.61	206.66
CIEN	12:46	13.69	13.69	13.71	CIEN	12:46	13.69	13.69	13.71
ERTS	12:46	17.79	17.78	17.79	ERTS	12:46	17.79	17.78	17.79
GD	12:45	0.0	67.69	67.69	GD	12:45	67.69	67.69	67.69
GE	12:45	16.04	16.04	16.04	GE	12:45	16.04	16.04	16.04
INTC	12:46	20.18	20.17	20.18	INTC	12:46	20.18	20.17	20.18
JBLU	12:45	5.53	5.51	5.53	JBLU	12:45	5.53	5.51	5.53
JNPR	12:46	25.84	25.82	25.84	JNPR	12:46	25.84	25.82	25.84
MU	12:46	7.63	7.61	7.63	MU	12:46	7.63	7.61	7.63
NTAP	12:45	29.28	29.28	29.29	NTAP	12:45	29.28	29.28	29.29
NUAN	12:46	13.99	13.98	14.00	NUAN	12:46	13.99	13.98	14.00
PFE	12:46	17.87	17.87	17.87	PFE	12:46	17.87	17.87	17.87
TWX	12:46	32.16	32.16	32.18	TWX	12:46	32.16	32.16	32.18

- JBLU Details
- JBLU News
- JBLU Charts
- Group 1
- Group 2
- Group 3
- Show Keyboard
- Switch Application
- Close

- d. Market Stats: When you open the Market Stats window, the latest market statistics will automatically load. To update the window, press Refresh. The time of the last refresh will appear at the top of the screen.

Market Stats - 12:44 PM			
Index	Last	Change	
Dow Jones	10406.36	-0.6	
Nasdaq	2195.66	-2.19	
S&P 500	1107.31	-1.99	
Internals	NYSE	NASDAQ	AMEX
ADV:	1154	978	184
DEC:	1801	1582	246
UNCH:	117	119	58

- e. Market Movers: Select an index and a category, and then press Submit to display Market Movers. The top 5 stocks in the category of the selected index will appear. Scroll right to view all the statistics. Press Submit to refresh the current index and category.



Available indices and categories:

- i. Indices:
 1. NYSE
 2. AMEX
 3. NASDAQ
- ii. Categories:
 1. Top \$ Gainers
 2. Top \$ Losers
 3. Top % Gainers
 4. Top % Losers
 5. Most Actives
 6. Most Trades

- f. Quote, DJ Indices, and S&P Indices: Enter in a symbol, and then press Get Quote to get the stats for the stock or index you entered. The program will display a real-time quote for that stock or index.

Quote	DJ Indices
Symbol: rimm	Symbol: dji
<input type="button" value="Get Quote"/> <input type="button" value="Cancel"/>	<input type="button" value="Get Quote"/> <input type="button" value="Cancel"/>
RESEARCH IN MOTION LTD	DJ INDUSTR AVERAGE
Last: 56.84 Time: 11:05 Chg: +1.31 Vol: 7081701 % Chg: +2.37% Open: 55.37 Bid: 56.83 PE: 25.9439 Ask: 56.84 Prev Cls: 55.52 Day Range: 54.8 - 57.04 52-Week Range: 35.09 - 148.13	Last: 8136.82 Time: 11:05 Chg: +58.45 Open: 8070.32 % Chg: +.72% Prev Cls: 8078.36 Day Range: 8044.67 - 8162.15 52-Week Range: 7449.38 - 14198.1

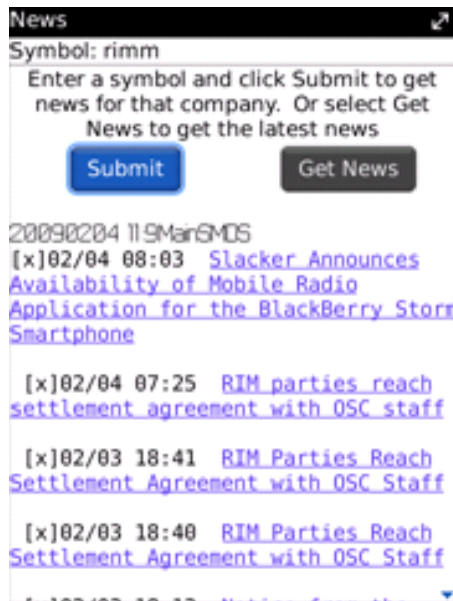
CME/S&P Indices
Symbol: md.y
<input type="button" value="Get Quote"/> <input type="button" value="Cancel"/>
S & P MID-CAP 400
Last: 512.40 Time: 11:05 Chg: +8.24 Open: 503.99 % Chg: +1.63% Prev Cls: 504.16 Day Range: 502.25 - 513.59 52-Week Range: 281.34 - 926.67

- g. Dow Components: When you open the Dow Components window, real-time stats for the 30 Dow Jones companies will automatically load. Select Refresh from the Blackberry menu to update the window. Scroll down to view any symbols that don't appear on the screen. Tap any symbol to access detailed quotes, news, and charts for that symbol.

Dow Components					Dow Components				
Symbol	Last	Change	% Change	Volume	Symbol	Last	Change	% Change	Volume
AA	13.64	+0.03	+2.22%	1252	BAC	15.71	-0.15	-1.00%	6105
AXP	41.03	-0.40	-0.98%	5229	CAT	59.40	-1.00	-1.65%	4123
BA	52.04	-0.43	-0.83%	1703	CSCO	23.98	+0.10	+0.46%	1899
BAC	15.71	-0.15	-1.00%	6105	CVX	78.81	+0.20	+0.26%	3351
CAT	59.40	-1.00	-1.65%	4123	DD	35.18	+0.24	+0.71%	2997
CSCO	23.98	+0.10	+0.46%	1899	DIS	30.81	+0.11	+0.35%	5950
CVX	78.81	+0.20	+0.26%	3351	GE	16.04	+0.04	+0.25%	2970
DD	35.18	+0.24	+0.71%	2997	HD	26.67	-0.97	-3.52%	1974
DIS	30.81	+0.11	+0.35%	5950	HPQ	50.81	.00	.00%	7049
GE	16.04	+0.04	+0.25%	2970	IBM	128.39	+0.18	+0.14%	4286
HD	26.67	-0.97	-3.52%	1974	INTC	20.18	-0.04	-0.24%	1842
HPQ	50.81	.00	.00%	7049	JNJ	62.20	+0.01	+0.01%	6048
IBM	128.39	+0.18	+0.14%	4286	JPM	43.10	+0.06	+0.14%	1347
INTC	20.18	-0.04	-0.24%	1842	KO	56.74	.00	.00%	2794
INI	62.20	+0.01	+0.01%	6048	KFT	27.62	.00	-0.01%	4923

- HPQ Details
- HPQ News 6105
- HPQ Charts 4123
- Refresh 1899
- Show Keyboard 2997
- Switch Application
- Close 2970
- 1974

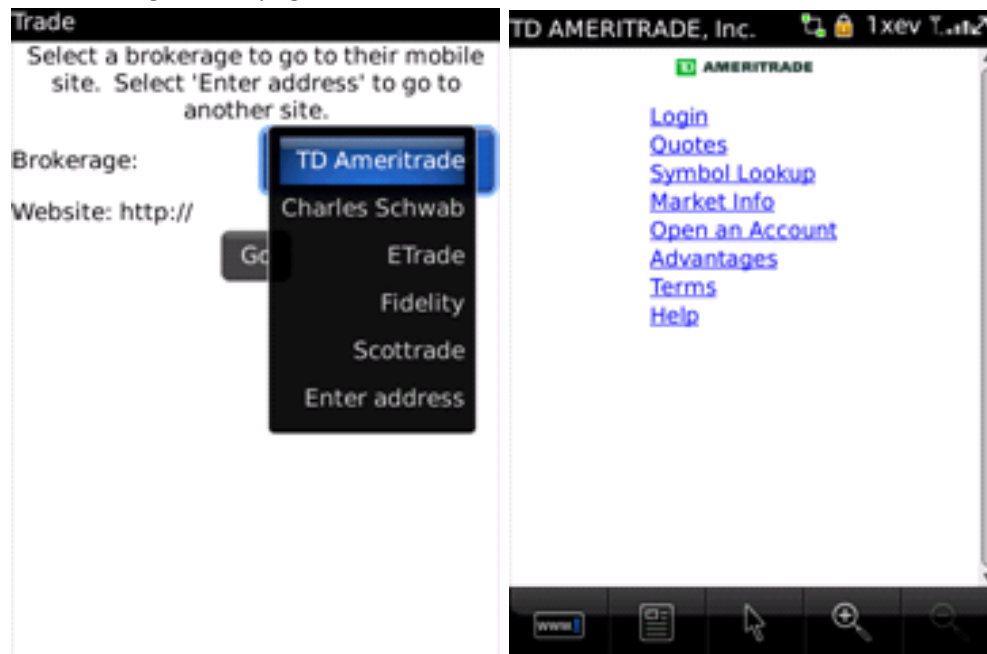
- h. News: Enter a stock symbol for which you want the latest news on, and click Submit to search for the news items for that stock. Click Get News to get the latest general news.



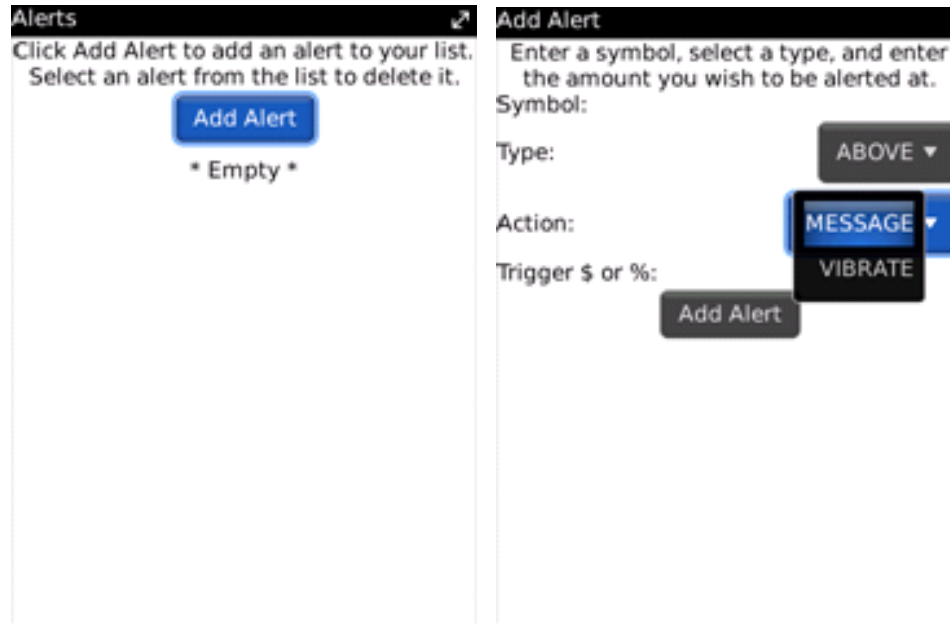
- i. Charts: Type in the stock for which you want charts. Select the chart type, frequency and time period, and click Get Charts to load the chart(s). If you scroll down to view the full chart, click Return on the Blackberry menu to return to the chart selection screen.



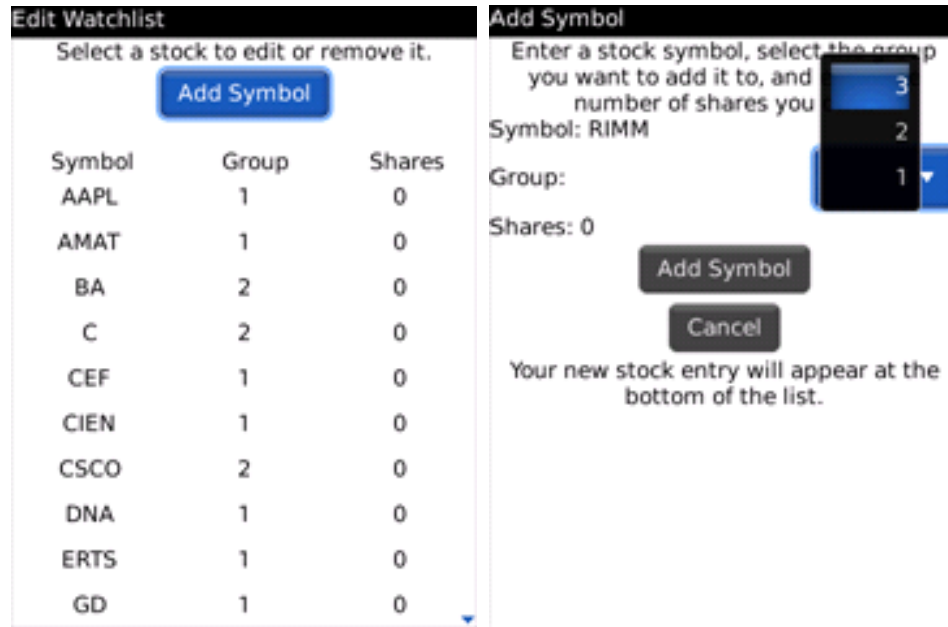
- j. Trade: Select a brokerage, then click Go to access their mobile web site. If your brokerage isn't listed, simply go to "Enter address" to type in the web address of your brokerage. Make sure to keep the "http://" at the beginning of the address. To save the site you entered, click "Add Site". A Blackberry browser window will open up with the brokerage's web page.



- k. Blackberry Alerts: These are localized alerts that notify you of stock prices while you are logged in to PDATrade on your Blackberry. Click Add Alert to add an alert. Enter a stock symbol, and then choose to be notified via message or handset vibration whether your stock has gone above or below a price threshold, or has changed by a certain percent. To delete an alert, click on it and choose Delete.



- I. Edit Watchlist: To add a symbol, press Add Symbol. Enter a stock symbol, the group you want to place it in, and the number of shares you have, and press “Add Symbol” to add it to your list. You can have more than 25 stocks in each group. To remove or edit a symbol, scroll to it on the list and tap it. You will be asked whether you want to remove or edit the stock. If you choose to edit, the Add Symbol window will appear with the current information for your symbol filled in. You will be asked to confirm any changes you made when you close the Watch List Editor. If you save your changes, you will have to re-login to complete the update.



- m. Options: To get an option, enter a symbol in the popup box. Select a date to view options for that strike date. Switch between call options and put options by clicking the tabs at the top of the screen. You can sort the options through the Blackberry menu. Choose "In The Money Options" to highlight options that are currently in the money.

Option Dates - GOOG	Call Options - GOOG			
	Call Options		Put Options	
	Strike Price	Strike Date	Last	Chang
4/17/2010				
5/22/2010	800.0	6/19/2010	0.3	0.0
6/19/2010	790.0	6/19/2010	0.15	-0.15
9/18/2010	780.0	6/19/2010	0.35	0.0
1/22/2011	770.0	6/19/2010	0.25	0.0
1/21/2012	760.0	6/19/2010	0.15	0.0
	750.0	6/19/2010	0.5	0.0
	740.0	6/19/2010	0.55	-0.05
	730.0	6/19/2010	0.75	0.0
	720.0	6/19/2010	1.0	0.0
	710.0	6/19/2010	1.15	0.05
	700.0	6/19/2010	1.16	-0.14
	690.0	6/19/2010	1.75	0.0
	680.0	6/19/2010	1.99	-0.21
	670.0	6/19/2010	2.39	-0.11

Enter Symbol

- n. Update: Clicking this will open a webpage in the Blackberry browser that will check if you have the latest version of PDATrade. If you don't, it will display a link to download the latest version. Click it to install the updated program. You will have to reboot your device to complete the upgrade.



- o. Signup: Fill out the form to create a PDATrade account. Make sure you read the terms and conditions posted here and on our website, which you can find by logging in to the website. You will receive an e-mail with your temporary password after completing the form. Be sure to check your spam folder if you do not receive the e-mail.

Account Signup

User Info

Username: |
 E-mail:
 Re-enter E-mail:

Credit Card Info

CC Type: Visa ▾

CC Number:
 CVV:

Month: 01 ▾ Year: 2010 ▾

Q	W	E	R	T	Y	U	I	O	P
A	S	D	F	G	H	J	K	L	
Z	X	C	V	B	N	M	←		
!@123	sym	space	⬆️	aA	↩️				

- p. Portfolio: View your current holdings on this page. Scroll right to view all information for each holding. Total values are displayed at the bottom of the page. Choose Add Item to add a stock to the list, or Remove Item to remove the selected item. You can add multiple holdings of the same symbol.

Symbol	Shares	Last	Change	Day G
AIG	1500	35.06	+0.95	+1425.00
BA	500	72.04	-0.95	-475.00
BAC	1000	18.12	+0.09	+90.00
ERTS	1000	19.10	+0.26	+260.00
GE	1000	18.53	+0.20	+200.00
GOOG	1000	571.01	+2.21	+2210.00
IBM	1000	129.35	+1.10	+1100.00
INTC	1000	22.59	+0.20	+200.00
VZ	750	31.46	+0.18	+135.00
Total				+5145.00

Symbol:	Shares:	Purchase Price:	Purchase Date: 04/05/10
Add Item			
Cancel			

	ABC	DEF
GHI	JKL	MNO
PQRS	TUV	WXYZ
		⬆️
123	sym	←
		↩️

5. Troubleshooting:

a. Unable to connect:

Make sure your internet connection is working. PDATrade requires an internet connection in order to transmit data. To verify that you have internet access, open up a web browser and navigate to a known web site such as MSN or Google. Ensure that you are not viewing a cached page by refreshing the browser. If you cannot get a connection, consult your device manual.

You may have to alter a few settings on your Blackberry in order to allow a connection to PDATrade. The settings are as follows:

- i. Go to Options, followed by Advanced Options, then TCP. You may have to go to Settings first to get Options. Check the APN and make sure it is an address corresponding to your carrier. If this field is blank, please contact your carrier to get the APN for your service.
- ii. Go back out to the Options menu, and go to Security Options, then TLS. Make sure TLS Default is set to Handheld. If it isn't, click and change it.
- iii. Go out of the TLS menu (remember to save), and go up to Firewall. If the firewall isn't disabled, disable it.
- iv. Leave the Firewall menu, and scroll up to Application Permissions. See if the PDATrade application is there. If so, click it and go to Edit Permissions.
 1. If the Connections option isn't set to Custom, set this by clicking it, scrolling to Change Option, and changing it to Custom. Then, expand Connections by clicking it and selecting Expand. The USB and Bluetooth connections should be set to Allow, and the Phone and Carrier Internet options should be set to Prompt.
 2. If the Interactions option isn't set to Custom, set this by clicking it, scrolling to Change Option, and changing it to Custom. Then, expand Interactions by clicking it and selecting Expand. The Interprocess Communication and Theme Data options should be set to Allow, while the Keystroke Injection and Browser Filters should be set to Deny.
 3. Make sure the User Data option is set to Allow. If it isn't, change it by clicking it and scrolling to Change Option.

b. Connection dropped:

If you lose your connection to PDATrade, it is likely due to an intermittent internet connection. Check and make sure that your wireless signal is adequate for consistent internet use. Note that if you are roaming on your cellular network you may not have a good connection.

c. Unable to stream data:

Make sure you signed up for streaming quotes. Log on to your account at www.pdatrade.com and view your entitlements. If RT Streaming isn't enabled, you will not be able to stream stocks to your device.

d. Technical support:

If you are still having trouble please contact us at (800) 300-3630 or e-mail us at info@pdatrade.com. We will do our best to assist you.