



2.3 User's Guide

Windows Mobile

April 2010

1. Introduction:

PDATrade is a powerful application that allows you to access real-time and streaming stock information. Using PDATrade, you can stream stock quotes to your phone, check the markets, look up commodities, get news and charts for any company, and much more. All data is provided in real-time, so you need just a Windows Mobile phone and an internet connection.

2. Requirements:

To run PDATrade, you will need a Windows Mobile PDA or Smartphone. You must have an internet connection to download information to your device.

3. Installation:

a. Install via PC:

To install PDATrade on your device using your PC, follow these steps:

- i. Sign up for a PDATrade account at our website, www.pdatrade.com.
- ii. Connect your device to your computer. Make sure it is recognized by Microsoft ActiveSync or Windows Mobile Device Center. Your device will include instructions on how to establish the connection.
- iii. Download and run the PDATrade 2.0 – Windows Mobile installer from our website.
- iv. After a couple of steps, the installer will automatically download and install PDATrade on your device. Follow the instructions that appear on the screen of your PC and device.

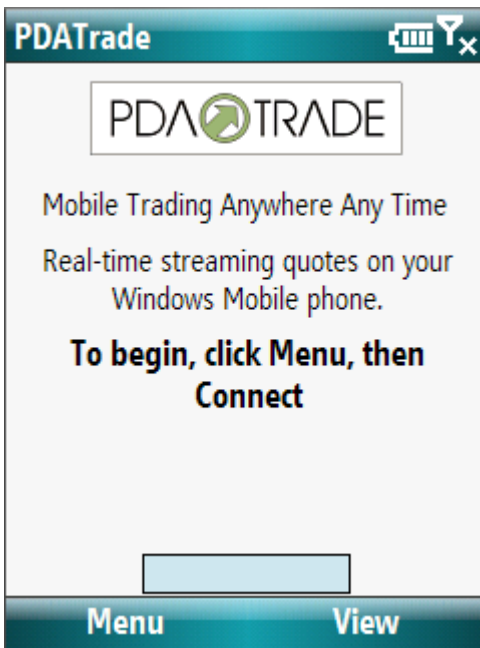
b. Install via PDA:

To install PDATrade directly onto your device, follow these steps:

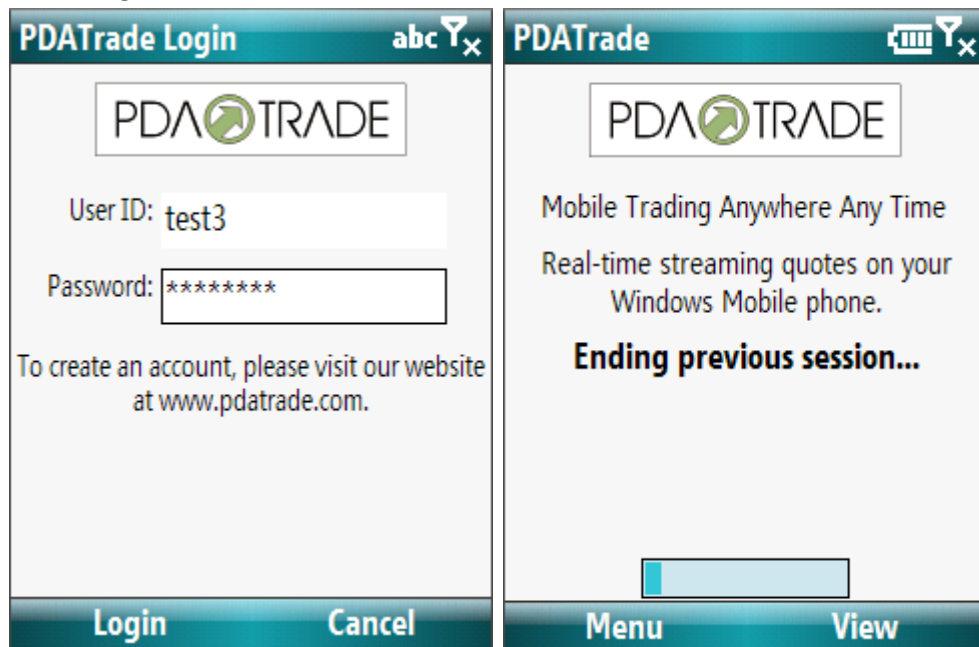
- i. Sign up for a PDATrade account at our website, www.pdatrade.com.
- ii. On your device, navigate to www.pdatrade.com/installs.
- iii. Click Windows Mobile Installer to begin the download.
- iv. Follow the instructions that appear on the device.

4. Working with PDATrade:

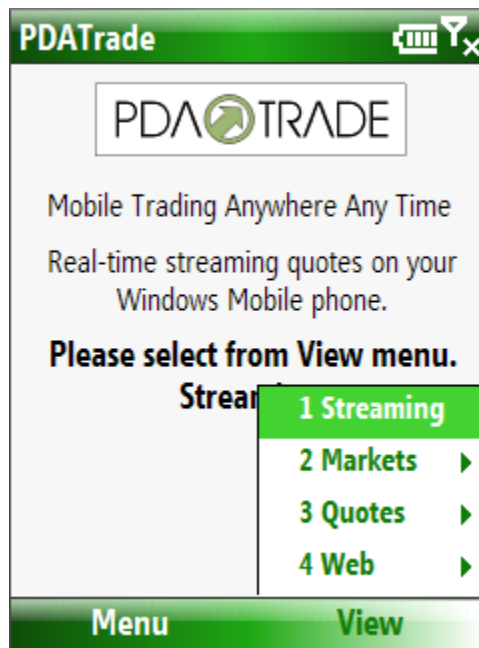
To run PDATrade, go to the Programs folder in the Start Menu, and click the PDATrade icon.



- a. To login, click Menu, then Connect on the main screen. Enter your user ID and password and select Login. The program will track your progress and let you know when a connection with our servers has been established. If you are logged in already on another computer or device, the program will prompt you to end that session before continuing on.



- b. To access the features of PDATrade, select a page from the View menu. Each will open up a new window with the feature you selected. To return to the home screen from any of these pages, select Home.



- c. Streaming: To switch between pages select a page from the Page menu. You can also press “1”, “2”, or “3” on your keypad to choose a page. Scroll down to view any symbols that don’t appear on the screen. When a symbol is highlighted (surrounded by brackets), click it to get detailed quotes, news, and charts for that symbol.

| Streaming | | | | | |
|-----------|---------|-------|-------|-------|--|
| SYM | TIME | LST | BID | ASK | |
| <AAPL> | 2:58 PM | 97.50 | 97.50 | 97.51 | |
| AMAT | 2:58 PM | 9.78 | 9.78 | 9.80 | |
| CEF | 2:57 PM | 11.33 | 11.32 | 11.34 | |
| CIEN | 2:58 PM | 6.15 | 6.15 | 6.15 | |
| DNA | 2:58 PM | 82.93 | 82.91 | 82.94 | |
| ERTS | 2:58 PM | 16.72 | 16.71 | 16.72 | |
| GD | 2:58 PM | 54.25 | 54.22 | 54.25 | |
| GE | 2:58 PM | 11.53 | 11.53 | 11.55 | |
| GENR | 2:28 PM | 0.48 | 0.45 | 0.48 | |
| GPRO | 2:58 PM | 45.45 | 45.40 | 45.43 | |
| GY | 2:58 PM | 2.90 | 2.88 | 2.90 | |
| IBM | 2:58 PM | 93.23 | 93.20 | 93.23 | |
| JBLU | 2:58 PM | 5.81 | 5.82 | 5.82 | |
| JNPR | 2:58 PM | 15.64 | 15.61 | 15.63 | |
| MU | 2:58 PM | 4.01 | 4.01 | 4.01 | |
| NTAP | 2:58 PM | 15.01 | 15.01 | 15.02 | |

| Streaming | | | | | |
|-----------|---------|-------|-------|-------|--|
| SYM | TIME | LST | BID | ASK | |
| <AAPL> | 2:58 PM | 97.55 | 97.54 | 97.55 | |
| AMAT | 2:58 PM | 9.78 | 9.78 | 9.80 | |
| CEF | 2:57 PM | 11.33 | 11.32 | 11.34 | |
| CIEN | 2:58 PM | 6.17 | 6.15 | 6.17 | |
| DNA | 2:58 PM | 82.93 | 82.91 | 82.94 | |
| ERTS | 2:58 PM | 16.76 | 16.75 | 16.76 | |
| GD | 2:58 PM | 54.25 | 54.24 | 54.27 | |
| GE | 2:58 PM | 11.56 | 11.55 | 11.56 | |
| GENR | 2:28 PM | 0.48 | 0.45 | 0.48 | |
| GPRO | 2:58 PM | 45.45 | 45.43 | 45.45 | |
| GY | 2:58 PM | 2.90 | 2.88 | 2.90 | |
| IBM | 2:58 PM | 93.26 | 93.26 | 93.26 | |
| JBLU | 2:58 PM | 5.82 | 5.82 | 5.82 | |
| JNPR | 2:58 PM | 15.63 | 15.63 | 15.63 | |
| MU | 2:58 PM | 4.01 | 4.01 | 4.01 | |
| NTAP | 2:58 PM | 15.01 | 15.01 | 15.01 | |

- d. MarketStats: When you open the Market Stats window, the latest market statistics will automatically load. Click Refresh to update the window. The time of the last refresh will appear at the top of the screen.

| Market Stats - 3:07 PM | | | |
|------------------------|---------|---------|--------|
| Market Indices | | | |
| Dow | 7905.29 | -365.58 | |
| NASDAQ | 1529.17 | -62.39 | |
| SP 500 | 828.98 | -40.91 | |
| Internals | | | |
| | NYSE | AMEX | NASDAQ |
| Adv | 460 | 171 | 401 |
| Dec | 2604 | 338 | 1950 |
| Unch | 83 | 70 | 87 |
| Home | | Refresh | |

- e. Market Movers: Select an index and a category to display Market Movers. The top 5 stocks in the selected category of the selected index will appear. The top half shows the symbol, current price and change in value, while the bottom half shows the number of trades, the total volume, and change in percent in the same order as the top half. Click Refresh to refresh the current index and category.

| Top \$ Gainers - NYSE | | | Most Actives - NASDAQ | | |
|-----------------------|---------|--------|---|-------|--------|
| Symbol | Last | Change | Symbol | Last | Change |
| NVR | 428.12 | +25.37 | QQQQ | 28.62 | +0.79 |
| MKL | 291.45 | +21.20 | MSFT | 19.87 | +0.72 |
| WPO | 399.09 | +19.39 | INTC | 13.66 | +0.38 |
| BLK | 121.80 | +8.44 | ORCL | 16.13 | +0.34 |
| AZO | 115.80 | +7.44 | CSCO | 16.01 | +0.69 |
| Trades | Volume | % Chg | 1 Top \$ Gainers % Chg 2 Top \$ Losers 5 +2.84% 3 Top % Gainers 7 +3.76% 4 Top % Losers % 5 Most Actives % 6 Most Trades % | | |
| 951 | 104987 | +6.30% | 1 Index ▶ % 2 Type ▶ % 3 Refresh Menu | | |
| 462 | 54523 | +7.84% | | | |
| 458 | 49274 | +5.11% | | | |
| 3246 | 490320 | +7.45% | | | |
| 11370 | 1605425 | +6.87% | | | |
| Home | | Menu | | | |

Available indices and categories:

i. Indices:

1. NYSE
2. AMEX
3. NASDAQ

ii. Categories:

1. Top \$ Gainers
2. Top \$ Losers
3. Top % Gainers
4. Top % Losers
5. Most Actives
6. Most Trades

f. Quote, DJ Indices, and S&P Indices: Enter in a symbol, and then click Get Quote or Get Index to get the stats for the stock or index you entered. The program will display a real-time quote for that stock or index.

| Quote abc Y x | CME/S&P Indices abc Y x |
|--|--|
| Symbol: <input type="text" value="msft"/> | Index: <input type="text" value="md.y"/> |
| MICROSOFT CP | S_P MID-CAP 400 |
| Last: 28.52 Time: 12:22 PM | Last: 860.08 Time: 11:52 AM |
| Chg: +0.27 Open: 28.28 | Chg: +1.58 Open: 858.48 |
| %: +0.96% Prev Cls: 28.25 | %: +0.18% Prev Cls: 858.5 |
| Bid: 28.52 Day: 28.60-28.18 | Day Range: 866.32-858.48 |
| Ask: 28.53 Year: 37.50-26.87 | 52wk Range: 926.67-281.34 |
| Vol: 28421301 PE: 16.3295 | Realtime Quote |
| Realtime Quote | |
| Home Get Quote | Home Get Index |

- g. Dow Components: When you open the Dow Components window, real-time stats for the 30 Dow Jones companies will automatically load. Click Get Stats to update the window. Scroll to a symbol and click it to get details, news, and charts for that stock.

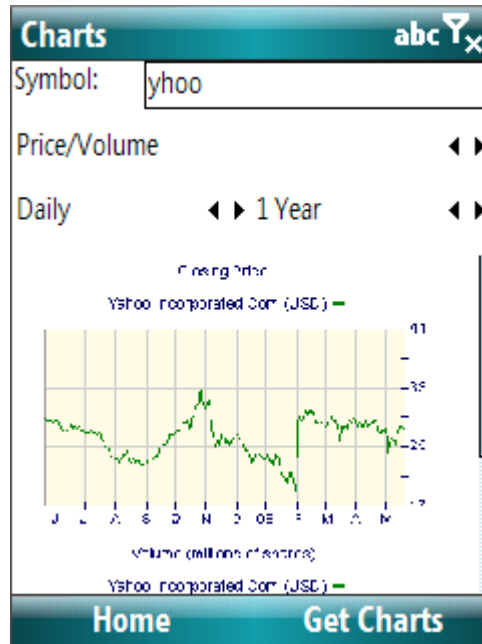
| Dow Components | | | | Select |
|----------------|-------|--------|----------|--|
| Symbol | Last | Change | % Change | |
| AA | 7.67 | -0.83 | -9.76% | Symbol: CVX Quote News Charts |
| AXP | 16.06 | -1.69 | -9.52% | |
| BA | 40.24 | -2.56 | -5.98% | |
| BAC | 5.67 | -1.22 | -17.71% | |
| C | 3.41 | -0.54 | -13.67% | |
| CAT | 30.80 | -1.92 | -5.87% | |
| CVX | 71.39 | -3.03 | -4.07% | |
| DD | 23.74 | -1.10 | -4.43% | |
| DIS | 18.76 | -0.68 | -3.50% | |
| GE | 11.62 | -1.02 | -8.07% | |
| GM | 2.77 | -0.06 | -2.20% | |

Home Refresh Close

- h. News: The page will default to a general latest news listing. Click Input Symbol to enter a stock symbol for which you want the latest news on. Click Get News to search for the news items for that stock. Click Back to go back one page (if available). Click Reset to go back to the home page.

| News | |
|------------------------|---|
| Symbol: | goog |
| 20080522 12:26MainSMDS | |
| [x]05/22 02:16 | BRIEF: Google wants Franklin Park couple's lawsuit in federal court |
| [x]05/21 09:45 | Stock Traders Easily Beat the Markets Amidst 100% Profitable Trading Streak |
| [x]05/21 09:31 | Subaye.com Co-organizes Google SMB Marketing Forum in Guangzhou |
| Home Menu | |

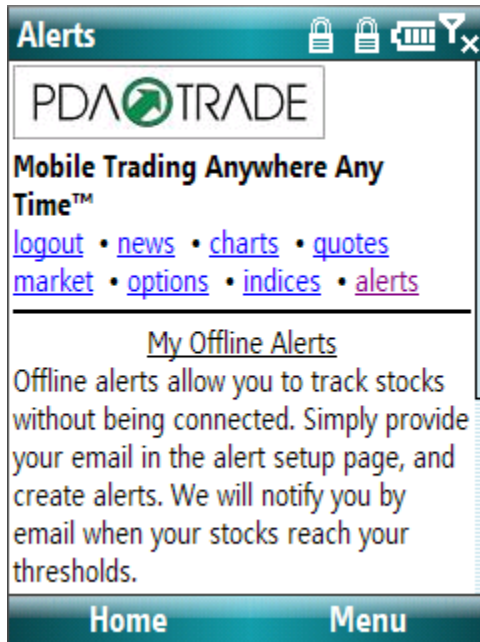
- i. Charts: Type in the stock for which you want charts. Select the chart type, frequency and time period, and click Get Charts to load the chart(s).



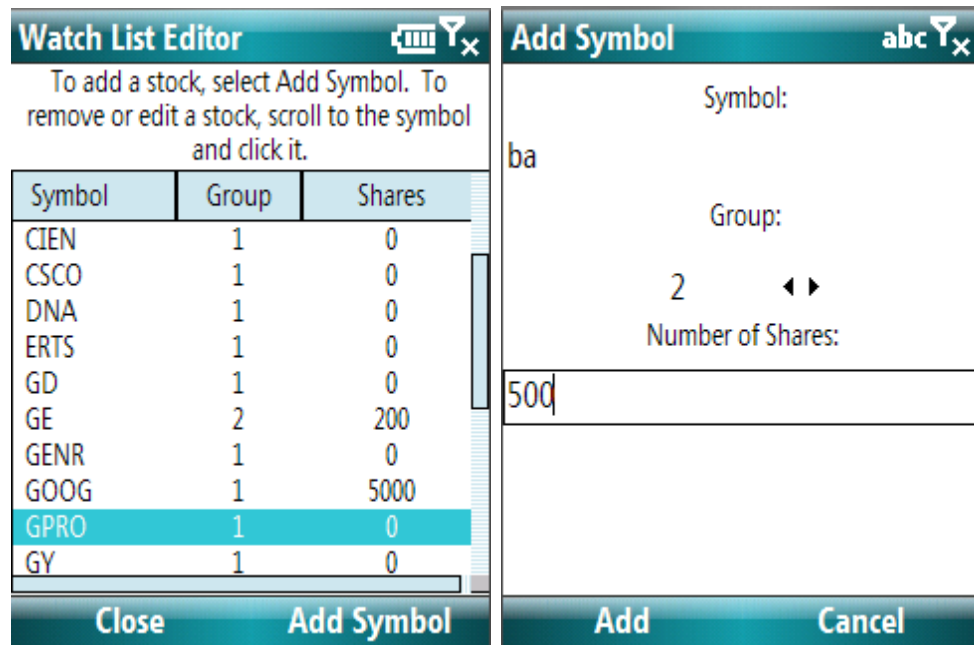
- j. Trade: Select a brokerage, then click Go to access their mobile web site. If your brokerage isn't listed, simply go to "Enter an address" to type in the web address of your brokerage. Make sure to keep the "http://" at the beginning of the address. To save the site you entered, click "Add Site".

The image displays two screenshots of a mobile trading application. The left screenshot shows the 'Trade' screen where a user has selected 'ETrade' as a brokerage. The website address 'http://www.etrade.com' is entered. The right screenshot shows the E*TRADE Financial mobile website. It displays market data for DOW (12606.81, +5.62), NASDAQ (2461.05, +12.78), and S&P 500 (1392.05, +1.34). Below the data is a list of navigation links: 1. Log On, 2. Quotes, 3. Symbol Lookup, 4. News, 5. Market Summary, 6. E*TRADE Branch Lo, 7. Help, 8. Agreement. A menu is visible with options: 1 Back, 2 Forward, 3 Stop, 4 Refresh. Both screenshots have a 'Home' button at the bottom.

- k. E-Mail Alerts: This will take you to the Alerts page of the PDATrade Mobile Web Portal, where you can setup and view your alerts.



- l. Watch List Editor: To add a symbol, click Add Symbol. Enter a stock symbol, the group you want to place it in, and the number of shares you have, and click “Add” to add it to your list. You can put more than 25 stocks in each group. To remove or edit a symbol, scroll to it on the list and click it. You will be asked whether you want to remove or edit the stock. If you choose to edit it, the Add Symbol window will appear with the current information for your symbol filled in. You will be asked to confirm any changes you made when you close the Watch List Editor. If you save your changes, you will have to re-login to complete the update.



- m. Update: Clicking this will open a webpage that will check if you have the latest version of PDATrade. If you don't, it will display a link to download the latest version. Click it to install the updated program. You will have to reload PDATrade after the update completes.



- n. Options: To get an option, enter a symbol in the text box and select a strike date. Call and put options are listed according to strike price. To sort, select from the Sort option in Menu. Select In-The-Money to highlight options that are currently in the money.

| Options - GOOG | | | | | |
|----------------|------|--------------|-----------|-------|-------|
| Symbol: | | Strike Date: | | | |
| GOOG | | 4/17/2010 | | | |
| Bid | Ask | Volu... | Strike... | Bid | Ask |
| 2.15 | 2.30 | 1365 | 620.00 | 50.90 | 51.60 |
| 1.45 | 1.50 | 637 | 630.00 | 60.10 | 60.80 |
| 0.85 | 1.00 | 516 | 640.00 | 69.60 | 70.30 |
| 0.60 | 0.70 | 253 | 650.00 | 79.30 | 80.30 |
| 0.35 | 0.45 | 104 | 660.00 | 89.10 | 90.10 |

- o. Signup: Fill out the form to create a PDATrade account. Make sure you read the terms and conditions posted here and on our website, which you can find by logging in to the website. You will receive an e-mail with your temporary password after completing the form. Be sure to check your spam folder if you do not receive the e-mail.

PDATrade abc

Please fill out the following form to create your PDATrade account.

Username:

E-mail:

Re-enter E-mail:

Close **Sign Up**

- p. Portfolio: View your current holdings on this page. Scroll right to view all information for each holding. Total values are displayed at the bottom of the page. Choose Add Item to add a stock to the list, or Remove Item to remove the selected item. You can add multiple holdings of the same symbol.

Portfolio

| Symbol | Shares | Last | Change | Day Gain |
|--------|--------|--------|--------|----------|
| AIG | 1500 | 35.06 | +0.95 | +1425 |
| BA | 500 | 72.04 | -0.95 | -475 |
| BAC | 1000 | 18.13 | +0.09 | +90 |
| ERTS | 1000 | 19.10 | +0.26 | +260 |
| GE | 1000 | 18.53 | +0.20 | +200 |
| GOOG | 1000 | 571.01 | +2.21 | +2210 |
| IBM | 1000 | 129.35 | +1.10 | +1100 |

Home **Menu**

5. Troubleshooting:

- a. Unable to connect:
 Make sure your internet connection is working. PDATrade requires an internet connection in order to transmit data. To verify that you have internet access, open up a web browser and navigate to a known web site such as MSN or Google. Ensure that you are not viewing a cached page by refreshing the browser. If you cannot get a connection, consult your device manual.
- b. Connection dropped:
 If you lose your connection to PDATrade, it is likely due to an intermittent internet connection. Check and make sure that your wireless signal is adequate for consistent

internet use. Note that if you are roaming on your cellular network you may not have a good connection.

c. Unable to stream data:

Make sure you signed up for streaming quotes. Log on to your account at www.pdatrade.com and view your entitlements. If RT Streaming isn't enabled, you will not be able to stream stocks to your device.

d. Technical support:

If you are still having trouble please contact us at (800) 300-3630 or e-mail us at info@pdatrade.com. We will do our best to assist you.