



1.3 User's Guide

Apple iPhone & iPod touch

April 2010

1. Introduction:

PDATrade is a powerful application that allows you to access real-time and streaming stock information. Using PDATrade, you can stream stock quotes to your iPhone/iPod, check the markets, look up commodities, get news and charts for any company, and much more. All data is provided in real-time, so you need just your iPhone/iPod and an internet connection.

2. Requirements:

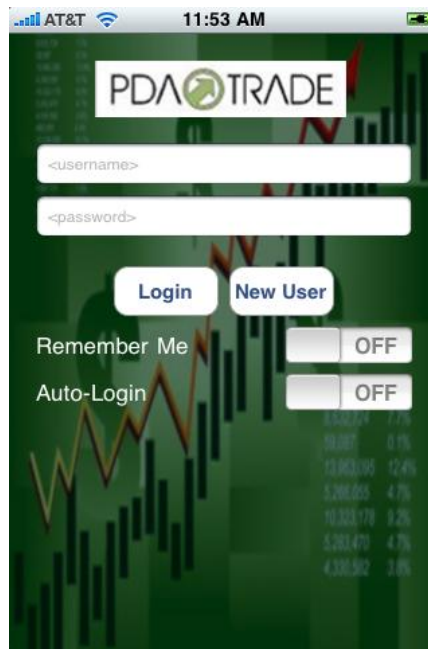
You will need an iPhone or iPod touch with iPhone OS 3.0 installed. Earlier iPhone OSes may work but are not guaranteed or supported. You must have an internet connection to download information to your device.

3. Installation:

Use iTunes on your Mac/PC or the App Store on your device to install PDATrade. You must sign up for an account to use PDATrade. You can sign up on our website, or click the New User button on the sign-in screen.

a. Working with PDATrade:

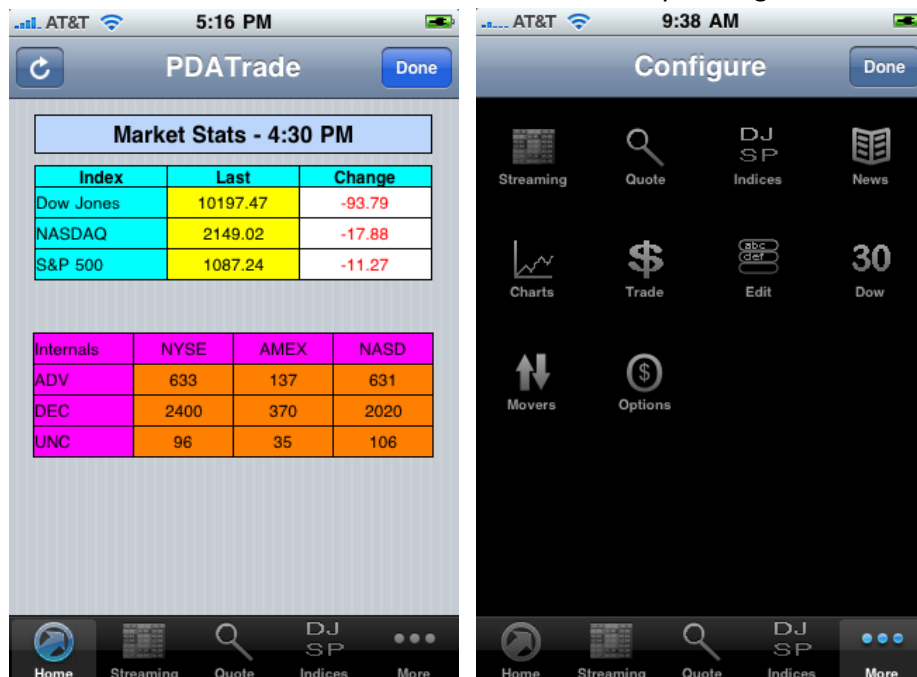
To run PDATrade, select the PDATrade icon on your home screen.



- b. To login, enter your user ID and password and click Login. The program will track your progress and flip to the home page when a connection with our servers has been established. If you want to save your PDATrade username and password to your iPhone, turn the “Remember Me” switch on. If you want to automatically login with your saved information, turn the “Auto-Login” switch on.



- c. Home Page: After you login, you will reach the home page where the latest market statistics are displayed. The last refresh time will appear at the top. Click Refresh to reload the page. Click Done to logout. To switch pages, select a tab in the tab bar at the bottom of the screen. You can customize the tab bar by clicking Edit in the More menu.



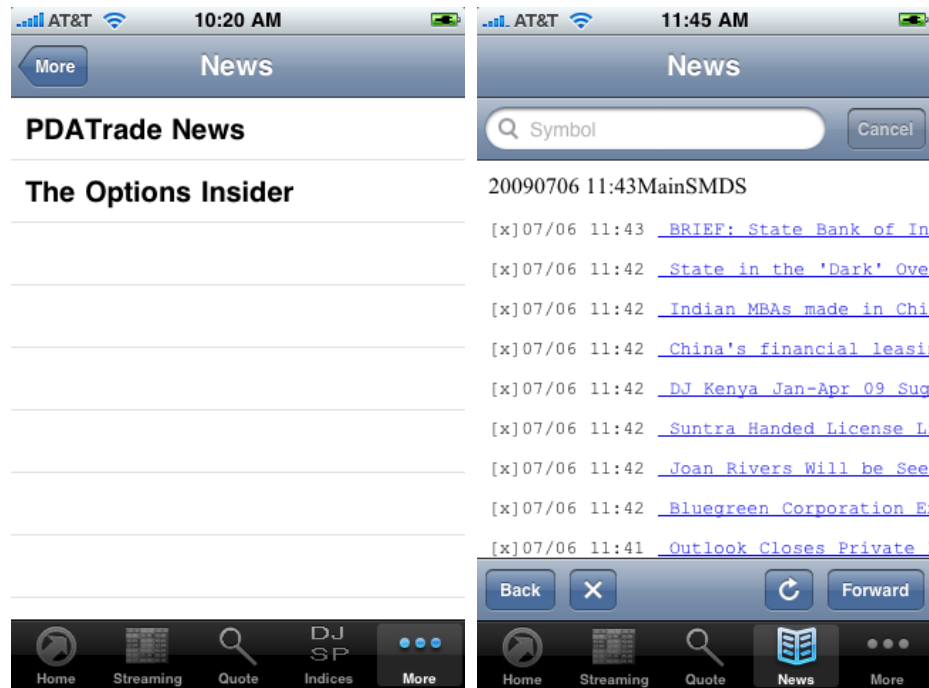
- d. Streaming: Stocks will begin streaming once you open the page. To switch between pages drag the current page left or right. Scroll down to view any symbols that don't appear on the screen. Touch any symbol to view the detailed quote for that symbol. Switch between Volume and Shares/Value by touching the column header.



- e. Quote, DJ Indices, and S&P Indices: Enter in a symbol, and then press Search to get the stats for the stock or index you entered. The program will display a real-time quote for that stock or index. Switch between Dow Jones and S&P Indices by using the bar at the top of the page.



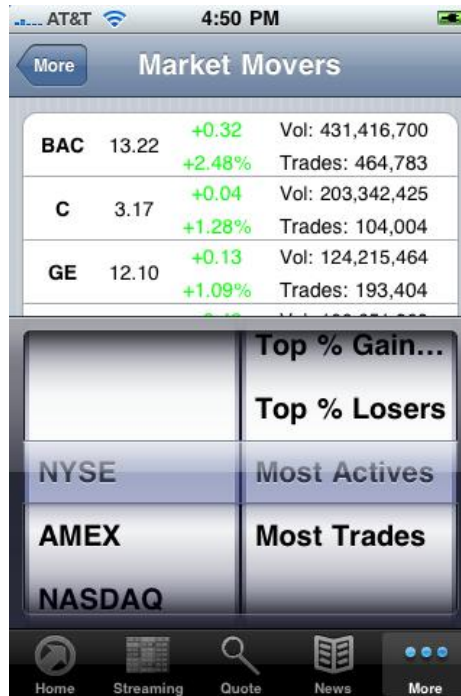
- f. News: Choose PDATrade News for general news and news on stocks, or choose The Options Insider for options-specific news from our partner.



- g. Dow Components: When you open the Dow Components window, real-time stats for the 30 Dow Jones companies will automatically load. Click the Refresh button to update the window. Scroll down to view any symbols that don't appear on the screen. Touch any symbol to view the detailed quote for that symbol.

Symbol	Last	Volume	Chg	%
AA	11.00	33,806,971	+0.22	+2.04%
AXP	24.64	17,306,144	+0.54	+2.24%
BA	48.44	7,030,794	-0.52	-1.06%
BAC	13.22	433,006,144	+0.32	+2.48%
CAT	33.65	14,482,407	-0.43	-1.26%
CSCO	18.92	71,524,674	-0.07	-0.37%
CVX	68.06	16,449,586	-0.37	-0.54%
DD	24.97	10,420,364	-0.20	-0.79%
	23.53	13,771,562		

- h. Market Movers: Select an index and a category from the picker wheel to get the top 5 stocks in that category. Scroll down to view all the statistics.



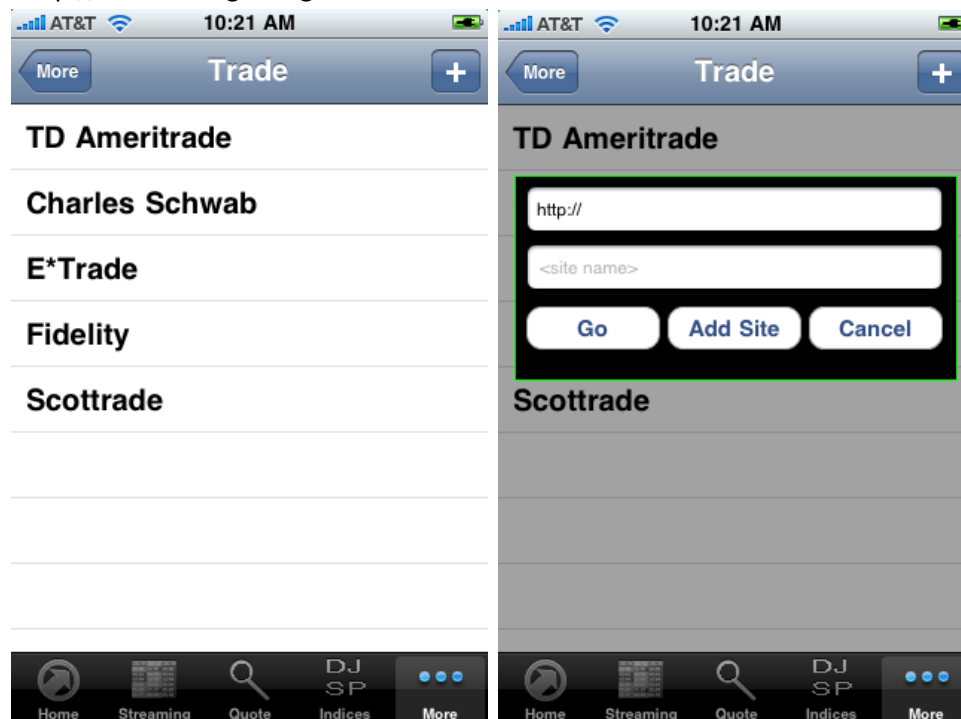
Available indices and categories:

- i. Indices:
 1. NYSE
 2. AMEX
 3. NASDAQ
- ii. Categories:
 1. Top \$ Gainers
 2. Top \$ Losers
 3. Top % Gainers
 4. Top % Losers
 5. Most Actives
 6. Most Trades

- i. Charts: Type in the stock for which you want charts. Select the chart type, frequency and time period by clicking on the respective buttons, and click Get Chart to load the chart(s).



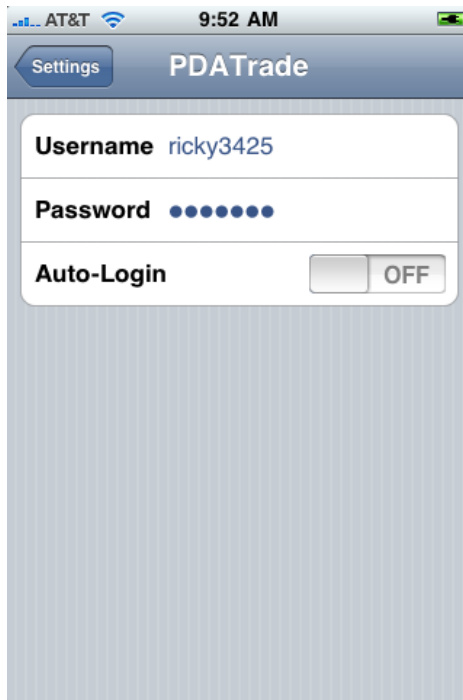
- j. Trade: Select a brokerage, then click Go to access their mobile web site. If your brokerage isn't listed, simply go to "Enter address" to type in the web address of your brokerage. Click Add Site to save the site for future reference. Make sure to keep the "http://" at the beginning of the address.



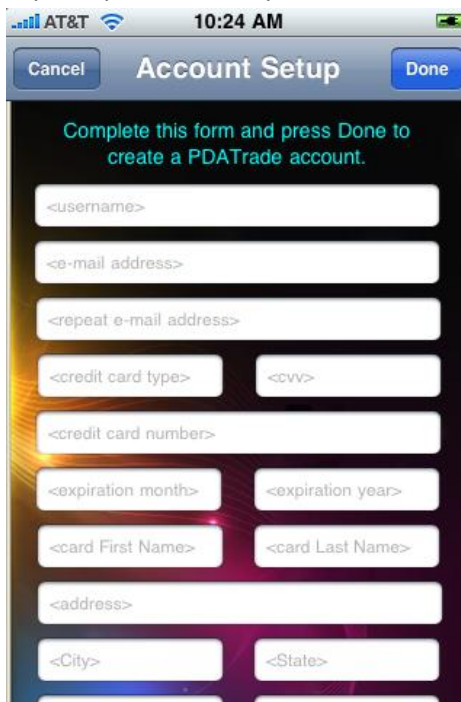
- k. **Edit Watchlist:** To add a symbol, click the + button. Enter a stock symbol, the group you want to place it in, and the number of shares you have, and click OK to add it to your list. You can have more than 25 stocks in each group. To edit a symbol, scroll to it on the list and tap it. The Add Symbol window will appear with the current information for your symbol filled in. To remove a symbol, swipe left across the table entry to show the Delete button, and click Delete. You will be asked to confirm any changes you made when you exit the Watch List Editor.



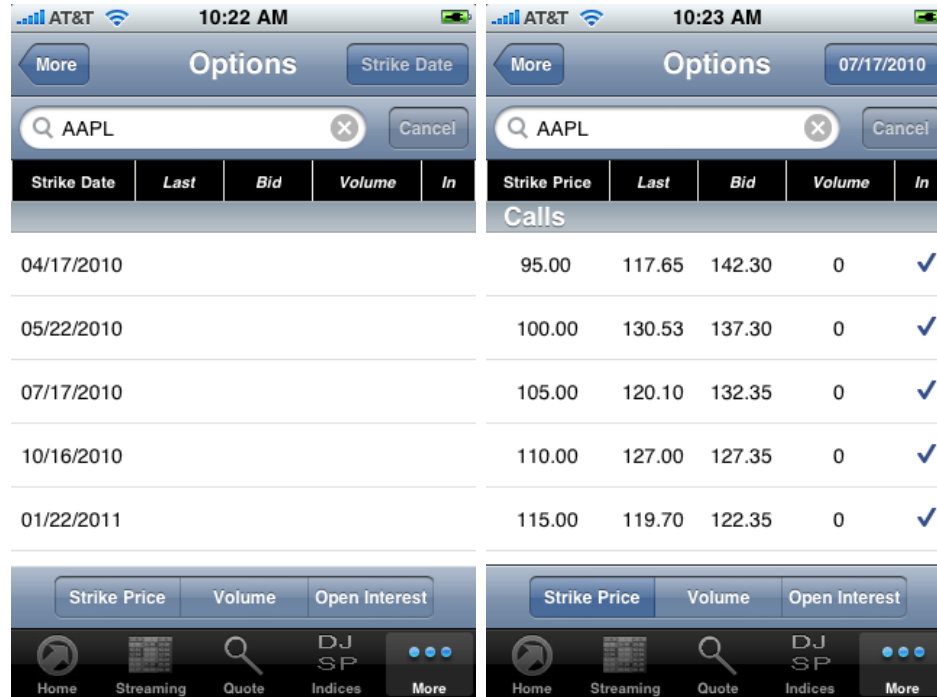
- I. Settings: To change PDATrade settings, go to the Settings menu on your iPhone/iPod and select PDATrade. You can save your username and password, and choose to automatically log in. These changes will be reflected on the sign-in page.



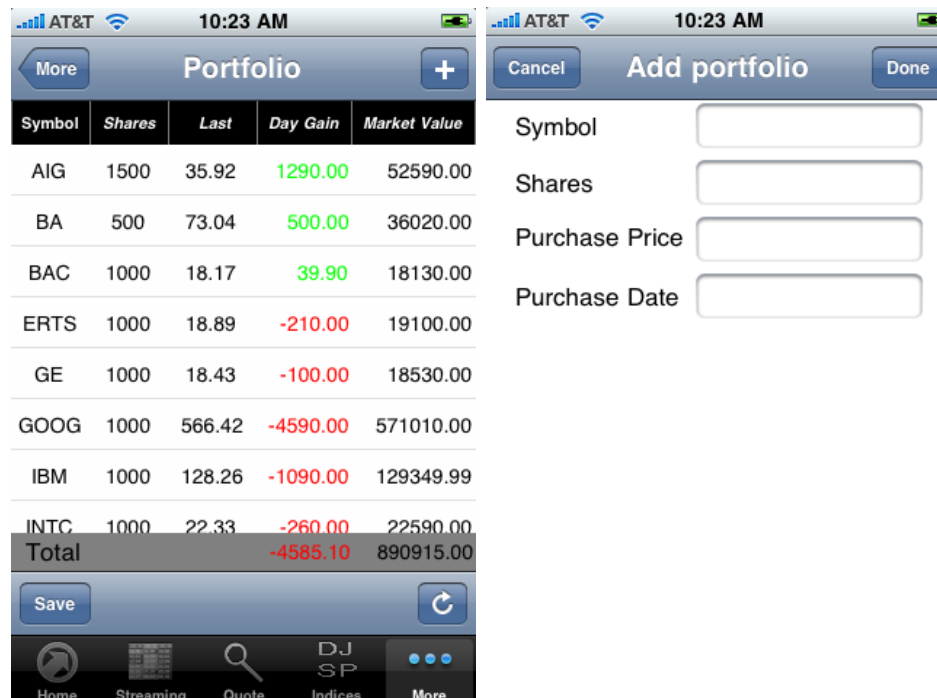
- m. Signup: Fill out the form to create a PDATrade account. Make sure you read the terms and conditions posted here and on our website, which you can find by logging in to the website. You will receive an e-mail with your temporary password after completing the form. Be sure to check your spam folder if you do not receive the e-mail.



- n. Options: To get an option, enter a symbol in the search box. Select a date to view options for that strike date. Scroll down to view all call and put options. Use the bar at the bottom to sort the options. Tap “In” to check off options that are currently in the money. Tap the strike date to change to another strike date.



- o. Portfolio: View your current holdings on this page. Tap the headers to show additional information for each holding. Totals are displayed at the bottom of the page. Tap “+” to add to the list or swipe left across an entry and tap “Delete” to remove the entry. You can add multiple holdings of the same symbol.



- p. Update: Use iTunes and the App Store to keep PDATrade up to date.
- 4. Troubleshooting:
 - a. Unable to connect:

Make sure your internet connection is working. PDATrade requires an internet connection in order to transmit data. To verify that you have internet access, open up Safari and navigate to a known web site such as Google. Ensure that you are not viewing a cached page by refreshing the browser. If you cannot get a connection, consult your device manual.
 - b. Connection dropped:

If you lose your connection to PDATrade, it is likely due to an intermittent internet connection. Check and make sure that your wireless signal is adequate for consistent internet use. Note that if you are roaming on your cellular network you may not have a good connection.
 - c. Unable to stream data:

Make sure you signed up for streaming quotes. Log on to your account at www.pdatrade.com and view your entitlements. If RT Streaming isn't enabled, you will not be able to stream stocks to your device.
 - d. Technical support:

If you are still having trouble please contact us at (800) 300-3630 or e-mail us at info@pdatrade.com. We will do our best to assist you.